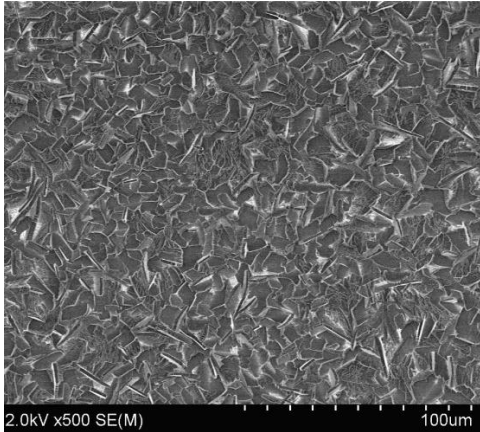
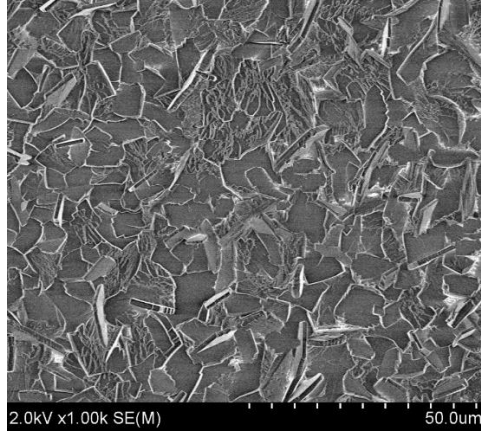


## SURFACOTE 222/223

### Thin Layer Phosphating (Nickel-free)



SURFACOTE 222/223, 500x magnification



SURFACOTE 222/223, 1000x magnification

#### Structure of Layer

Finely crystalline

Weight of coating 1.5 – 3.0 g/m<sup>2</sup> (spray method)  
2.0 – 3.5 g/m<sup>2</sup> (immersion method)

#### Application

Steel and zinc substrates

Spray and immersion application

Very good base for subsequent powder or paint coating

IMDS-ID-No. 9501722

#### Additives for Phosphating Bath

SURFACOTE 222 (make-up concentrate)

SURFACOTE 223 (maintenance concentrate)

SURFA-cor (for adjusting the acid ratio)

SURFACOTE Accelerator N

SURFACOTE Accelerator K

SURFACOTE Additive No. 6 (for aluminium and zinc surfaces)

For any further questions our competent field staff is at your disposal.