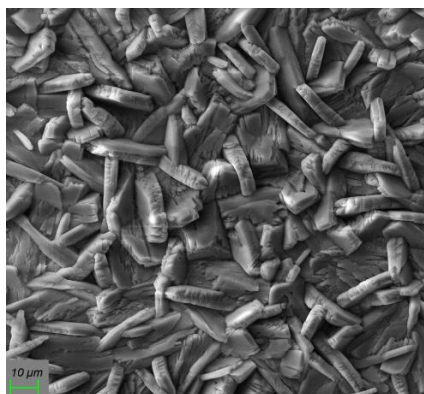
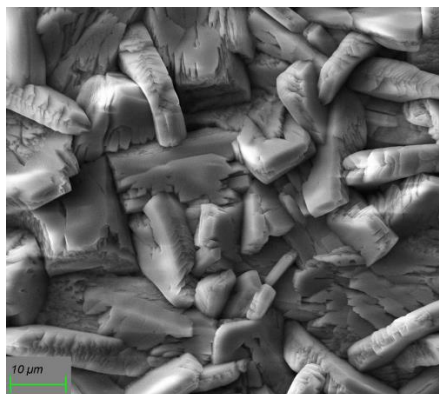


SURFACOTE 270

Thin Layer Zinc Phosphating (Internal Accelerator: Chlorate)



SURFACOTE 270, 500x magnification



SURFACOTE 270, 1000x magnification

Structure of Layer

Very finely crystalline zinc phosphate layer
Weight of coating 2 - 5 g/m²

Application

Steel and zinc surfaces
Immersion process
Base for subsequent powder or paint coating
IMDS-ID-No. 9501801

Additives for the Phosphating Bath

SURFACOTE 270 (is used for both, make-up concentrate and maintenance concentrate)

For any further questions our competent field staff is at your disposal.