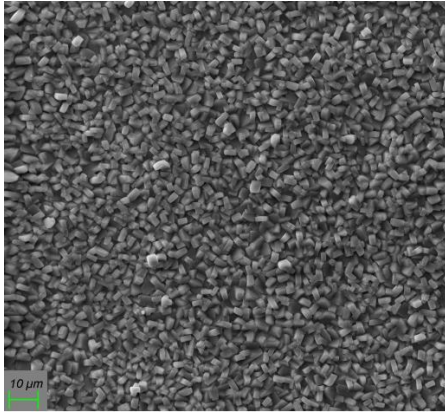
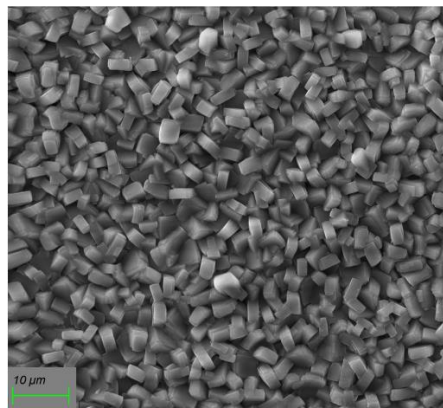


SURFACOTE 333/334

Thin Layer Tri-Cationic Phosphating



SURFACOTE 333/334, 500x magnification



SURFACOTE 333/334, 1000x magnification

Structure of Layer

Finely crystalline

Weight of coating 1.5 – 3.0 g/m² (spray method)
2.5 – 5.5 g/m² (immersion method)

Application

Steel and zinc substrates
Spray and immersion application
Outstanding base for subsequent powder or paint coating
Meets the requirements of leading car manufacturers
IMDS-ID-No. 9501829

Additives for the Phosphating Bath

SURFACOTE 333 (make-up concentrate)
SURFACOTE 334 (maintenance concentrate)
SURFA-cor (for adjusting the acid ratio)
SURFACOTE Accelerator N
SURFACOTE Accelerator K
SURFACOTE Additive No. 6 (for aluminium and zinc surfaces)

For any further questions our competent field staff is at your disposal.