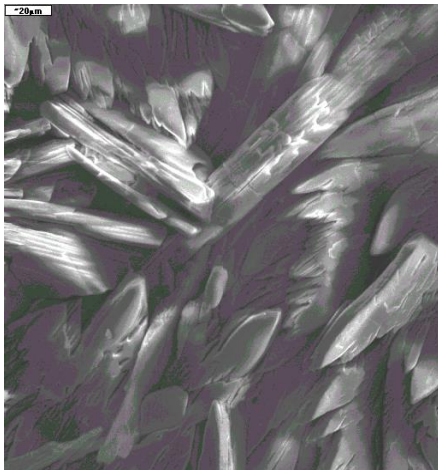
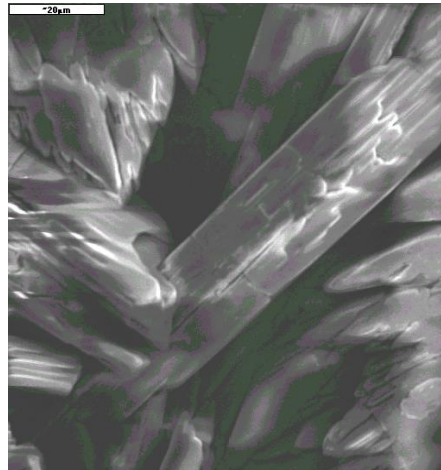


## SURFACOTE 480

Thick Layer Zinc Phosphating (Nickel-free)



SURFACOTE 480, 500x magnification



SURFACOTE 480, 1000x magnification

### Structure of Layer

Coarsely crystalline

Weight of coating 15 – 30 g/m<sup>2</sup>

### Application

Steel surfaces

Immersion process

Outstanding corrosion protection in combination with our corrosion protection oils SURFASEAL 85, SURFASEAL 100

Also suitable for cold forming

IMDS-ID-No. 7026761

### Additives for the Phosphating Bath

SURFACOTE 480 (is used for both, make-up concentrate and maintenance concentrate)

For any further questions our competent field staff is at your disposal.