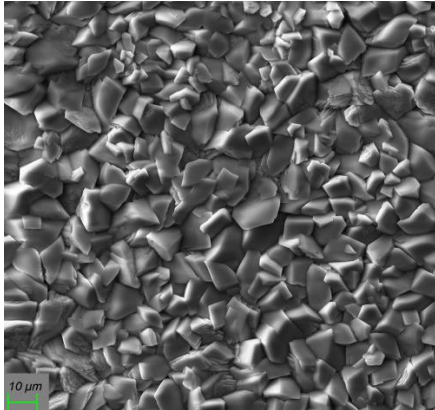
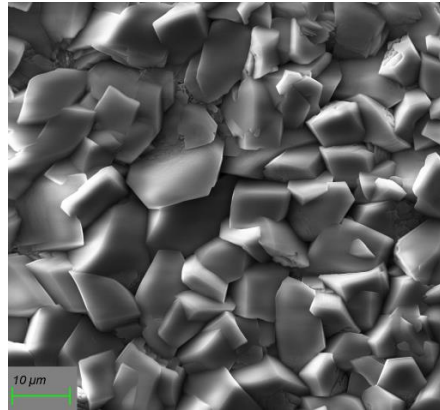


SURFACOTE MN 2

Manganese Phosphating



SURFACOTE MN 2, 500x magnification



SURFACOTE MN 2, 1000x magnification

Structure of Layer

Finely crystalline

Anthracite to black layers

Weight of coating 10 – 40 g/m²

Application

Steel surfaces

Improves the running-in characteristics of cogs, piston rings and suchlike

Immersion process

IMDS-ID-No. 7031907

Additives for the Phosphating Bath

SURFACOTE MN 2 (is used for both, make-up concentrate and maintenance concentrate)

Pre-Dipping

Two possible activations:

- (a) SURFACOTE Pre MN for coarse manganese phosphate layers
- (b) SURFACOTE Activator MN, Teil 1 in combination with SURFACOTE Activator, Teil 2 for finely crystalline phosphate layers

For any further questions our competent field staff is at your disposal.