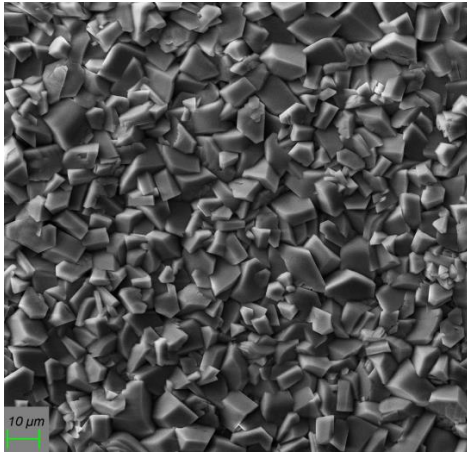
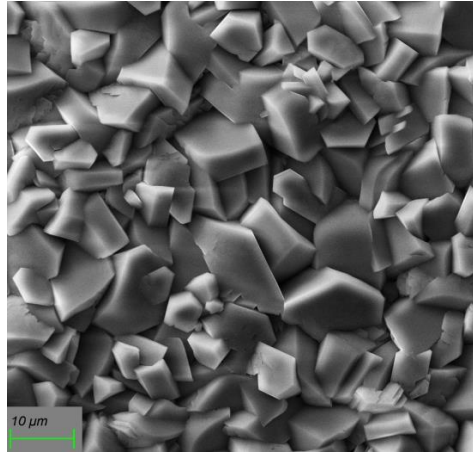


SURFACOTE MN 3

Manganese Phosphating



SURFACOTE MN 3, 500x magnification



SURFACOTE MN 3, 1000x magnification

Structure of Layer

Finely crystalline

Anthracite to black layers

Weight of coating 10 – 20 g/m²

Application

Steel surfaces

Improves the running-in characteristics of cogs, piston rings and suchlike

Immersion process

IMDS-ID-No. 7031907

Additives for the Phosphating Bath

SURFACOTE MN 3 (is used for both, make-up concentrate and maintenance concentrate)

Special features

For new starter preparation no adjustment required.

For any further questions our competent field staff is at your disposal.