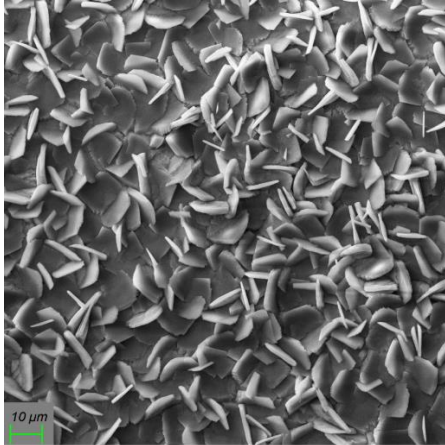
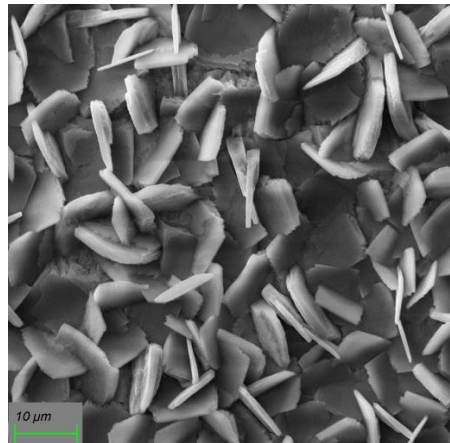


## SURFACOTE 125

### Thin Layer Zinc Phosphating



SURFACOTE 125, 500x magnification



SURFACOTE 125, 1000x magnification

### Structure of Layer

Finely crystalline

Weight of coating 2.0 – 6.5 g/m<sup>2</sup>

### Application

Steel and zinc substrates

Spraying and immersion applications

Base for subsequent powder or paint coating

IMDS-ID-No. 9501801

### Additives for Phosphating Bath

SURFACOTE 125 (is used for both, make-up and maintenance)

SURFACOTE Accelerator N

SURFA-cor (for adjusting the acid ratio)

For any further questions our competent field staff is at your disposal.