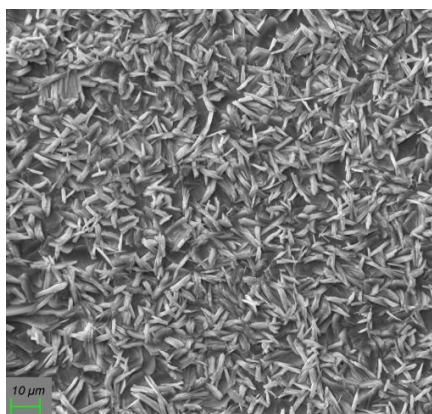
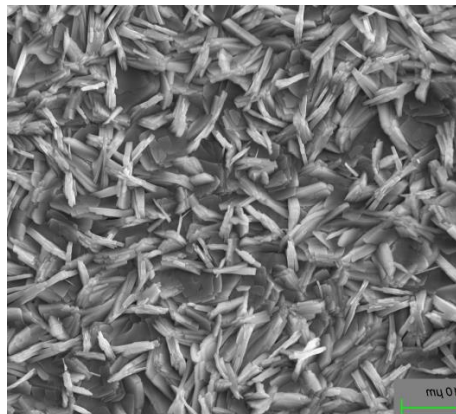


## SURFACOTE 240

Low-Temperature Thin Film Phosphating (Nickel-free)



SURFACOTE 240, 500x magnification



SURFACOTE 240, 1000x magnification

### Layer Formation:

- Fine crystalline
- Weight of coating: 1.7 – 2.5 g/m<sup>2</sup> (spray process)  
3.8 – 4.8 g/m<sup>2</sup> (immersion process)

### Application:

- Steel and zinc material
- Temperature: Immersion process 27 – 45 °C; spray process 35 – 45 °C
- Excellent adhesive base for subsequent lacquering and powder coating

### Additives for the phosphate bath:

- SURFACOTE 240 (concentrate for make-up and replenishment)
- SURFA-cor (for adjustment of the acid ratio)
- SURFACOTE Accelerator N (phosphating accelerant)
- SURFACOTE Additive No. 6 (for aluminum and zinc coated surfaces)

For any further questions our competent field staff is at your disposal.