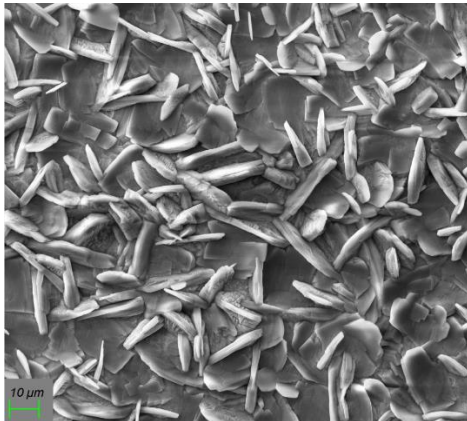
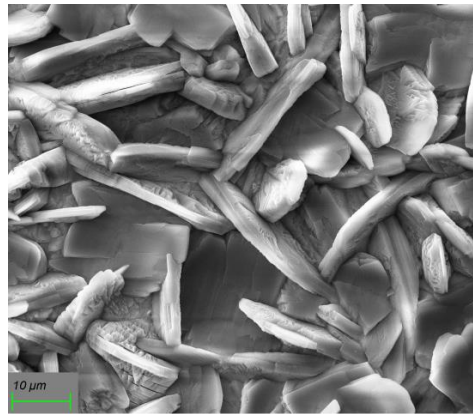


SURFACOTE 775

Zinc/Calcium Phosphating



SURFACOTE 775, 500x magnification



SURFACOTE 775, 1000x magnification

Structure of Layer

Finely crystalline

Weight of coating 1.5 – 3.5 g/m²

Application

Steel surfaces

Base for subsequent painting or powder coating

Immersion process

IMDS-ID-No. 9501938

Additives for the Phosphating Bath

SURFACOTE 775 (is used for both, make-up concentrate and maintenance concentrate)

For any further questions our competent field staff is at your disposal.